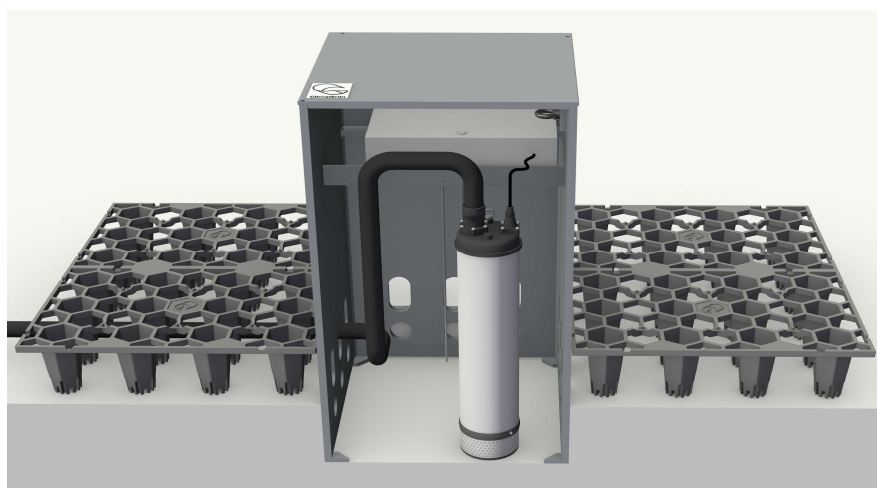


Product data sheet

item number: 301010

Pumping system CG-PS vario for the intelligent thin water storage



The Climagruen pumping system vario can take in large quantities of rainwater, release it in a reduced manner or dispense the water to the vegetation in a controlled manner.

Technical data

Material shaft	(polypropylene) painted
External dimensions	500 x 500 x 870 mm
Weight	approx. 50 kg
Voltage / frequency	230 V / 50 Hz
Protection class	IP 68 – IP 56
Power consumption	4 – 8 A
Rated power	0,94 – 1,60 kW
Delivery form	1 set on one-way pallet 80 x 120 cm
Delivery weight	approx. 60 kg
Storage	Dry and UV-protected

Suggested tender text:

Supply and installation of a ClimaGruen pumping system CG-PS vario (according to patent 10 2020 000 021 106) for water absorption from the thin water storage tank from the retention modules CG-RM 90 and CG-RM 150.

Set consisting of PP shaft, pump, filter, pressure reducer, check valve, electrical control, protection relay, programmer, electrical cabinet IP56.

To ensure proper functioning, the exact positioning of the pump system must be defined on site by means of laser measurement of the roof slope. The electrical connection of the unit must be carried out by a qualified electrician.

Features: Material shaft PP, dimensions 50x50x87cm, weight approx. 60 kg, supply voltage 230 V / 50 Hz, current consumption 4-8 A, nominal power 0,94 – 1,60 kW; protection class pump IP56, protection class junction box IP56